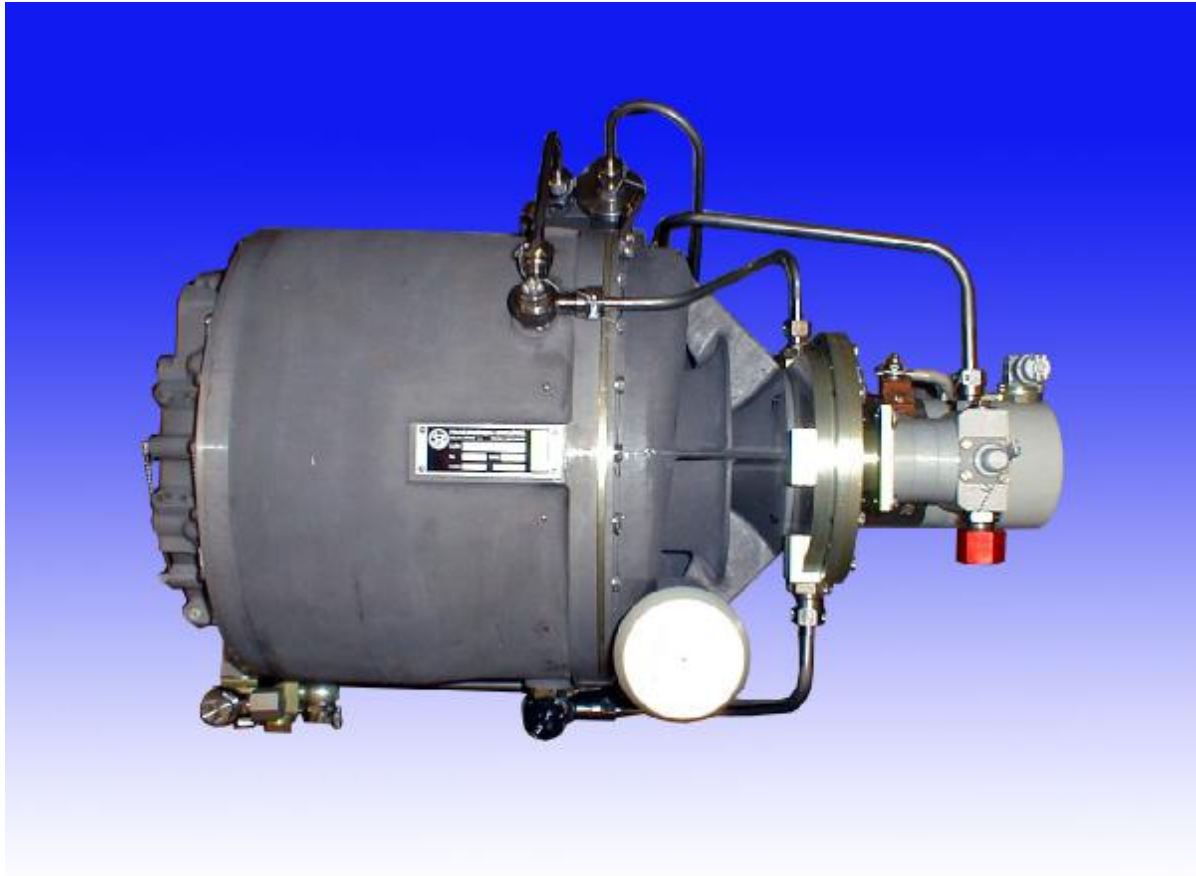


AUXILIARY POWER UNIT SAPHIR 5



APU SAPHIR 5 is a small turbine with the air bleed from the compressor which is intended for starting of aircraft mean-power engines, eg. L39 training aircraft.

Technical Data

| | |
|--------------------------------------|---|
| Standard conditions | $T_0 = 15\text{ }^{\circ}\text{C}$ (59 °F), $p_0 = 1\ 013\ \text{mb}$ (14.7psi) |
| Max. bleed air flow | 25 kg/min (55 lb/min) |
| Pressure ratio | 3.1 |
| Starting speed | 50 500 rpm |
| Idle speed | 43 800 rpm |
| Altitude | 6000 m (19 700 ft) |
| Temperature range | -40° to + 60 °C (-40° to + 140 °F) |
| Weight of APU | 28,5 kg (62,6 lb) |
| Total weight (including accessories) | 41 kg (90.4 lb) |

První brněnská strojírna Velká Bíteš, a. s.
Aircraft Technique Division
Vlkovská 279
CZ – 595 12 Velká Bíteš
Tel.: +420 566 822 300, 566 822 304
Fax.: +420 566 822 372
e-mail: obchodit@pbsvb.cz

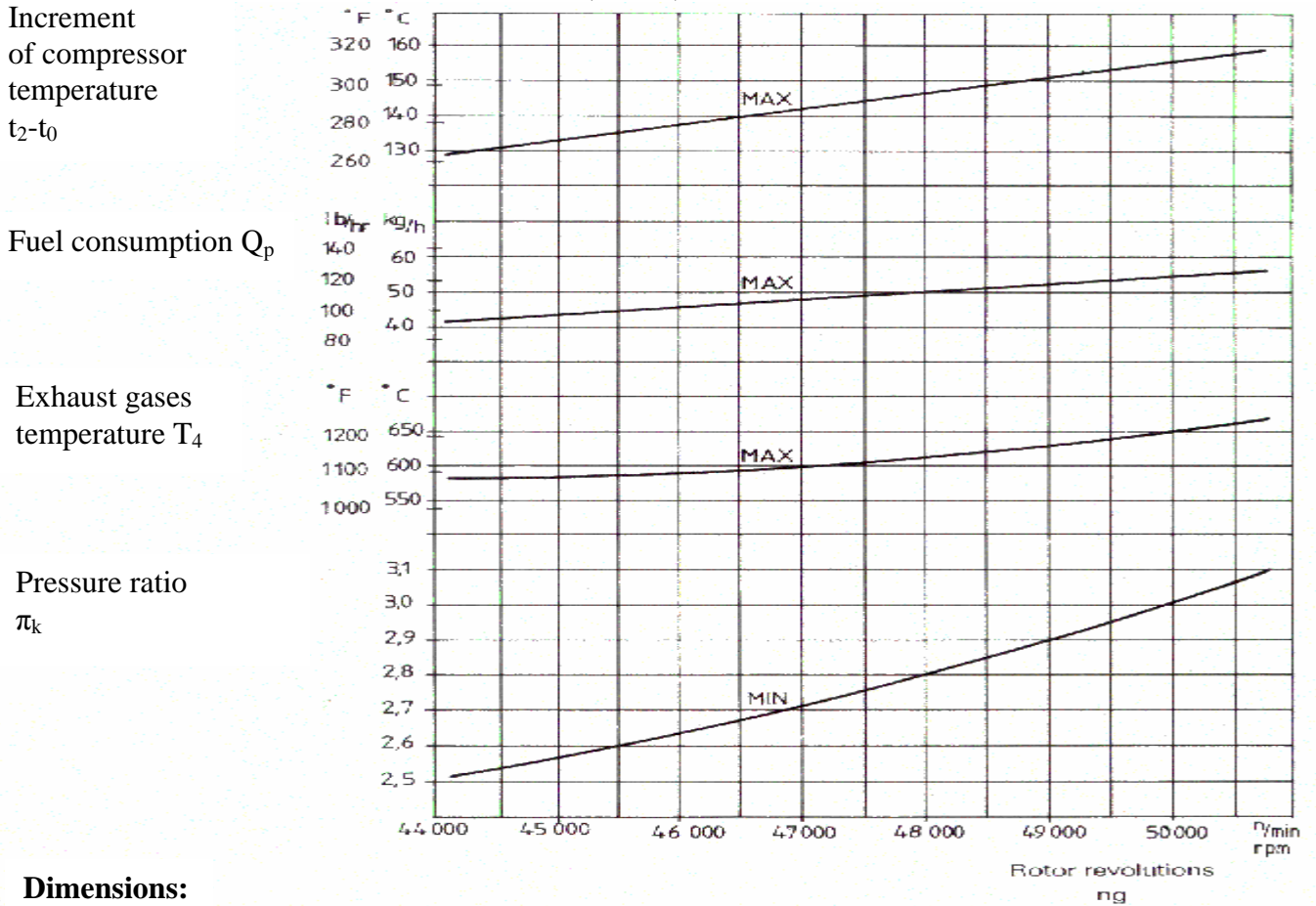
 První brněnská strojírna
Velká Bíteš, a.s.

Standard Equipment

- Autonomous oil system
- Electronic control system
- Oil pressure protection
- Speed sensing unit protection
- Underspeed protection
- Overspeed protection

APU Characteristics

(at ISA)



Dimensions:

